



**JOHN PSARRAS**  
**S&P CHARTERING**



IN PIRAEUS SINCE 1981

Ph:+30 210 4123696 4133931 4115482 Fx:+30 210 4170618  
E'Mail: psarras@psarrasj.gr Website:www.psarrasj.gr  
(Members of Hellenic Shipbrokers Association - 1984)

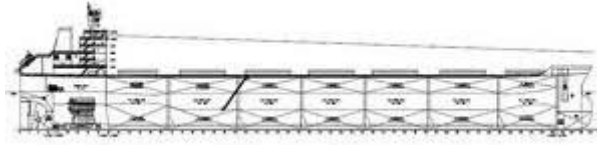
## **BI-MONTH REPORT**

### **END NOVEMBER**

**2019**

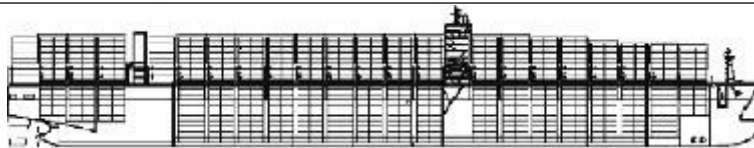
**The scope of this report is to assist our clients and friends with a quick glance every about 15 days to get a feeling of the market by reading the more interesting sales in view of higher or lower prices of the main vessels types as well as the demolition prevailing prices.**





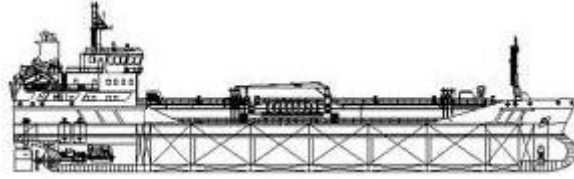
## BULK CARRIERS

| NAME             | DWT   | Y.O.B | P.O.B       | PRICE                              |
|------------------|-------|-------|-------------|------------------------------------|
| KM TOKYO         | 83483 | 2010  | JAPAN       | 15,8 MIL USD TO UNDISCLOSED        |
| CORAL EMERALD    | 75632 | 2007  | JAPAN       | 11.5 MIL USD TO UNDISCLOSED        |
| HARVEST FESTIVAL | 72497 | 1998  | JAPAN       | 5,3 MIL USD TO CHINESE             |
| LORD             | 52504 | 2004  | PHILIPPINES | 5,3 MIL USD TO CHINESE VIA AUCTION |
| ERO L MARIAL     | 50457 | 2003  | CHINA       | EN BLOC 12 MIL USD TO CHINESE      |
| GRAIG CARDIFF    | 34827 | 2012  | CHINA       | 8,5 MIL USD TO TURKISH             |
| SHELDUCK         | 34467 | 2012  | S.KOREA     | 9,5 MIL USD TO GREEKS              |
| AARGAU           | 32790 | 2010  | CHINA       | 5,8 MIL USD TO TURKISH             |
| LOVELY KLARA     | 28186 | 2002  | JAPAN       | 4,5 MIL USD TO CHINESE             |
| FORTUNE ERA      | 27369 | 1997  | S.KOREA     | 3.6 MIL USD TO UNDISCLOSED         |
| PRINCESA MAGANDA | 28361 | 2012  | JAPAN       | 8.6 MIL USD TO UNDISCLOSED         |



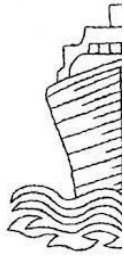
## CONTAINER SHIPS

| NAME   | DWT   | TEU  | Y.O.B.                       | P.O.B   | PRICE                        |
|--|-------|------|------------------------------|---------|------------------------------|
| SYNERGY BUSAN<br>SYNERGY OAKLAND<br>SYNERGY KEELUNG<br>SYNERGY ANTWERP | 40000 | 4253 | 2009<br>2009<br>2009<br>2008 | S.KOREA | EN BLOC 40 MIL USD TO GREEKS |



## TANKERS

| NAME  | DWT    | HULL | Y.O.B                        | P.O.B.  | PRICE  |
|---|--------|------|------------------------------|---------|--|
| MARAN CALLISTO  | 299167 | DH   | 1999                         | S.KOREA | 18 MIL USD TO UNDISCLOSED                        |
| VIRGO SUN   | 115577 | DH   | 2007                         | JAPAN   | 26 MIL USD TO GREEKS                             |
| FSL PIRAEUS<br>FSL PERTH  | 109672 | DH   | 2006                         | CHINA   | EN BLOC<br>39,6 MIL<br>USD TO<br>INDONESIA<br>NS |
| MAERSK PROMISE<br>MAERSK<br>PRODUCER<br>MAERSK PRINCESS<br>MAERSK PHOENIX | 109600 | DH   | 2006<br>2006<br>2005<br>2005 | CHINA   | EN BLOC 80 MIL<br>USD TO<br>INDONESIANS          |
| CHAMPION TRADER   | 40727  | DH   | 1997                         | ITALY   | 7,2 MIL USD TO<br>CHINESE                        |
| TORM GARONNE  | 37178  | DH   | 2004                         | S.KOREA | 9,3 MIL USD TO<br>UNDISCLOSED                    |



# DEMOLITION



| NAME          | LDT  | DWT   | Y.O.B | P.O.B. | PRICE   |
|---------------|------|-------|-------|--------|---|
| KPS RAGIP BEY | 1470 | 1990  | 1999  | USA    | 415 USD<br>PER<br>LDT                           |
| KWANGTUNG     | 9449 | 23683 | 1994  | JAPAN  | 370 USD<br>PER<br>LDT<br>(GR.RE<br>CYCLIN<br>G) |



| NAME      | LDT  | DWT   | Y.O.B | P.O.B.  | PRICE                    |
|-----------|------|-------|-------|---------|--------------------------|
| TALA      | 2402 | 7313  | 1984  | JAPAN   | 330 USD<br>PER<br>LDT    |
| ARISTIMO  | 8147 | 45584 | 1997  | S.KOREA | 380<br>USD<br>PER<br>LDT |
| LADY NOOR | 4213 | 11538 | 1983  | FINLAND | 360<br>USD<br>PER<br>LDT |

## **Disclaimer**

All information stated in this report has been collected from a variety of maritime sources and is presented in good faith and without any guarantee from our part .

J. PSARRAS S+P CHARTERING, shall not accept any responsibility for any errors and/or omissions arising from this report and cannot be held responsible for any action taken and/or losses occurred as a result of the details included in this report.

Recirculation of same is not permitted without the written agreement of the aforementioned company, which is the only entitled one to produce copies of same.